

Locking Circuit Board Support

LCBST/CLCBST/LMSP/CBS/LNCBS

Natural

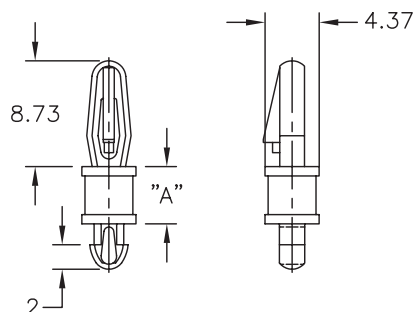


LCBST

Top Hole: Snap-lock: 3.18 ± 0.05

Panel Thickness: 1.57

Type 1



Bottom Hole: Snap-lock: 2.54 ± 0.05

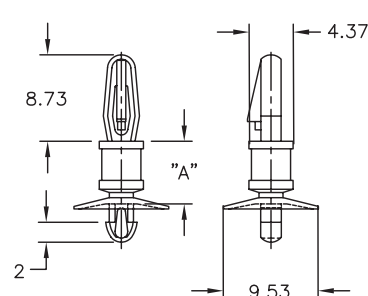
Panel Thickness: 1.63 Max.

CLCBST

Top Hole: Snap-lock: 3.18 ± 0.05

Panel Thickness: 1.57

Type 2



Bottom Hole: Snap-lock: 2.54 ± 0.05

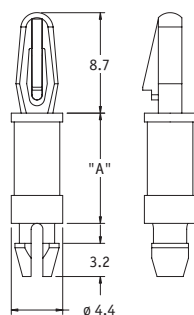
Panel Thickness: 1.57

LMSP

Top Hole: Snap-lock: 3.18 ± 0.05

Panel Thickness: 1.57

Type 3



Bottom Hole: Snap-lock: 3.18 ± 0.05

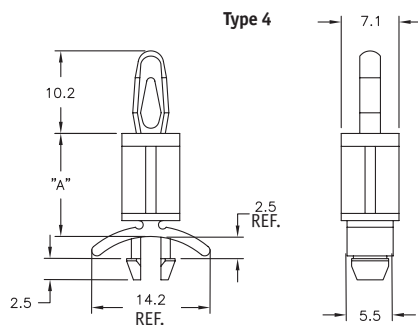
Panel Thickness: 1.57

CBS

Top Hole: Snap-fit: 4 ± 0.08

Panel Thickness: 1.57

Type 4



Bottom Hole: Snap-lock: 4.75 ± 0.08

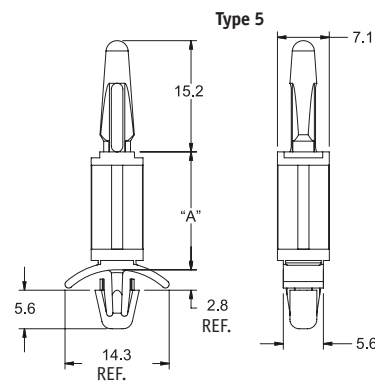
Panel Thickness: 0.79 - 1.98

LNCBS

Top Hole: Snap-fit: 4 ± 0.08

Panel Thickness: 1.57

Type 5



Bottom Hole: Snap-lock: 4.75 ± 0.08

Panel Thickness: 0.79 - 1.98

Part Number							"A" Standoff Height	Std Pack Qty
LCBST (Type 1)	CLCBST (Type 2)	LMSP (Type 3)		CBS (Type 4)		LNCBS (Type 5)		
UL94 V2 Nylon 6/6, RMS-01	UL94 V2 Nylon 6/6, RMS-01	UL94 V2 Nylon 6/6 RMS-01	UL94 V0 Nylon 6/6, RMS-19	UL94 V2 Nylon 6/6, RMS-01	UL94 V0 Nylon 6/6, RMS-19	UL94 V2 Nylon 6/6, RMS-01		
LCBST-2-01	CLCBST-2-01	LMSP-2-01	LMSP-2-19	-	-	-	3.2	1000
LCBST-3-01	CLCBST-3-01	LMSP-3-01	LMSP-3-19	CBS-3-01	CBS-3-19	LNCBS-3-01	4.8	1000
LCBST-4-01	CLCBST-4-01	LMSP-4-01	LMSP-4-19	CBS-4-01	CBS-4-19	LNCBS-4-01	6.4	1000
LCBST-5-01	CLCBST-5-01	LMSP-5-01	LMSP-5-19	-	-	-	7.9	1000
LCBST-6-01	CLCBST-6-01	LMSP-6-01	LMSP-6-19	CBS-6-01	CBS-6-19	LNCBS-6-01	9.5	1000
LCBST-7-01	CLCBST-7-01	LMSP-7-01	LMSP-7-19	-	-	-	11.1	1000
LCBST-8-01	CLCBST-8-01	LMSP-8-01	LMSP-8-19	CBS-8-01	CBS-8-19	LNCBS-8-01	12.7	1000
LCBST-9-01	CLCBST-9-01	LMSP-9-01	LMSP-9-19	-	-	-	14.3	1000
LCBST-10-01	CLCBST-10-01	LMSP-10-01	LMSP-10-19	CBS-10-01	CBS-10-19	LNCBS-10-01	15.9	1000
-	-	LMSP-12-01	LMSP-12-19	CBS-12-01	CBS-12-19	LNCBS-12-01	19.1	1000
-	-	LMSP-14-01	LMSP-14-19	CBS-14-01	CBS-14-19	LNCBS-14-01	22.2	1000